



## Report by:

Dr Zhengchu Tan, Dr Alex Berry, Professor Maria Charalambides, Dr Ana Mijic, Dr Will Pearse, Professor Alexandra Porter, Professor Mary P. Ryan, Professor Robert N. Shorten, Dr Marc E. J. Stettler, Professor Terry D. Tetley, Dr Stephanie Wright and Dr Marc A. Masen (Imperial College London)

Particles from car tyres pollute the environment and the air we breathe, whilst the long-term effects on our health and the ecosystem are unknown. These tyre wear particles are especially damaging due to the toxic chemicals that they are made from, which leach out of the particles into our rivers and oceans. These chemicals have a devastating impact on wildlife, and they accumulate into the food chain where they will ultimately pose a significant risk. Policy makers and scientists should set out an ambitious research agenda to investigate the problem, from the basics of how and why tyres wear and how this affects people and nature, to potential solutions, including particle capture technologies, new advanced materials and innovative business models, thus enabling a limit to the harmful impact of tyre wear particles on our health, water and air.

## Contents

What happens to tyres when we drive?	03
What do tyre particles look like?	04
Where do these particles end up?	05
What do tyre particles do to humans?	06
What do tyre particles do to the environment?	07
Why is it important to act now?	07
Research aimed at solving the tyre particle problem	08
Acknowledgements	08
About the author	08
References	09
About Imperial Zero Pollution initiative and Imperial College London	10
Contact us	10

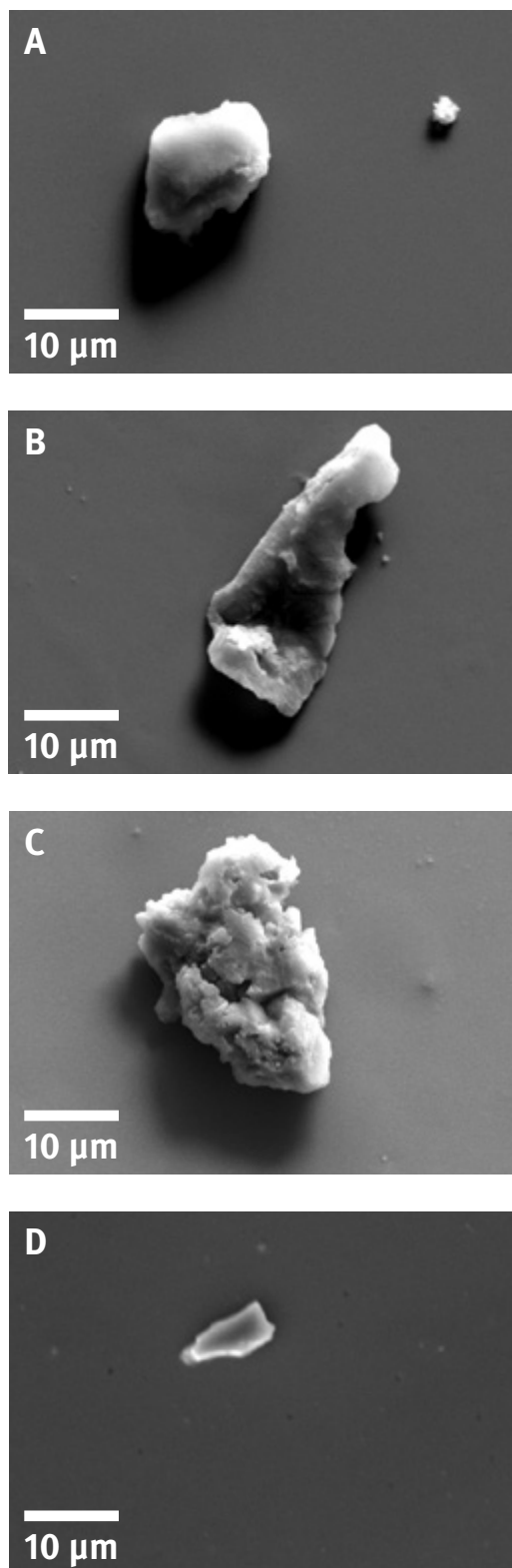


## What do tyre particles look like?

Particulate matter (PM) from vehicle emissions can either be characterised in terms of the sheer number of particles emitted, known as the particle number, or in terms of the mass of particles. Tyre wear particles are classified as non-exhaust emissions and are distinct from other particles emitted by road traffic vehicles due to their composition and the wide range of particle sizes and shapes (Raza et al., 2018).

Six million tonnes of tyre wear waste are produced globally and can range from visible pieces of tyre rubber to micro- ( $10^{-6}$  m) or even nano-particles ( $10^{-9}$  m) (Kole et al., 2017). Of these, particles are classified by aerodynamic diameter;  $PM_{0.1}$  indicates particles smaller than 100 nm,  $PM_{2.5}$  refers to particles smaller than 2.5  $\mu\text{m}$  and  $PM_{10}$  represents those smaller than 10  $\mu\text{m}$ . Studies have shown that the shape of the tyre wear particles depends on the underlying wear mechanism, they can be spherical or elongated and this influences their ability to interact with cells in our bodies (Chang et al., 2020; Knight et al., 2020; Park et al., 2018) (Figure 1). Scientists have found that the smaller nano-sized particles known as ‘ultrafine particles’ (Kumar et al., 2021) are abundantly released, which is worrying as they are small enough to interact with our cells, and more importantly, due to the toxicity of the chemicals used in tyre production, potentially cause harm to our body.

When talking about PM emissions, large pieces of tyre rubber will contribute the majority of the total particulate mass. However, in terms of the number of tyre wear particles,  $PM_{2.5}$  and  $PM_{0.1}$  particles are the most abundant. To be able to study the effects of tyre wear particles, it is crucial to better understand the size distribution of the generated particles (Baensch-Baltruschat et al., 2021; Baensch-Baltruschat et al., 2020). In one study, tyre wear particles up to 350  $\mu\text{m}$  were found, exhibiting a bimodal particle size distribution with peaks around 5  $\mu\text{m}$  and 25  $\mu\text{m}$ . (Kreider et al., 2010). The latter particles are in the same size range as human cells, but the interaction between tyre wear particles and our cells has not been well studied, leaving us unsure what is happening inside our bodies. Due to the agglomeration phenomena of ultrafine particles into micro-sized particles, we may be significantly underestimating the abundance of ultrafine particles (Park et al., 2018).



**Figure 1.** Different shapes and sizes of tyre wear particles imaged using scanning electron microscopy showing, relative to each other: (A) a  $PM_{10}$  spherical tyre wear particle, (B) a smooth, long and large tyre wear particle, (C) a large uneven tyre wear particle mass and (D) a  $PM_{10}$  tyre wear sharp fragment resembling a crystal structure similar to silica. Scale bar of 10  $\mu\text{m}$  = 0.01 mm (Mao, 2021)



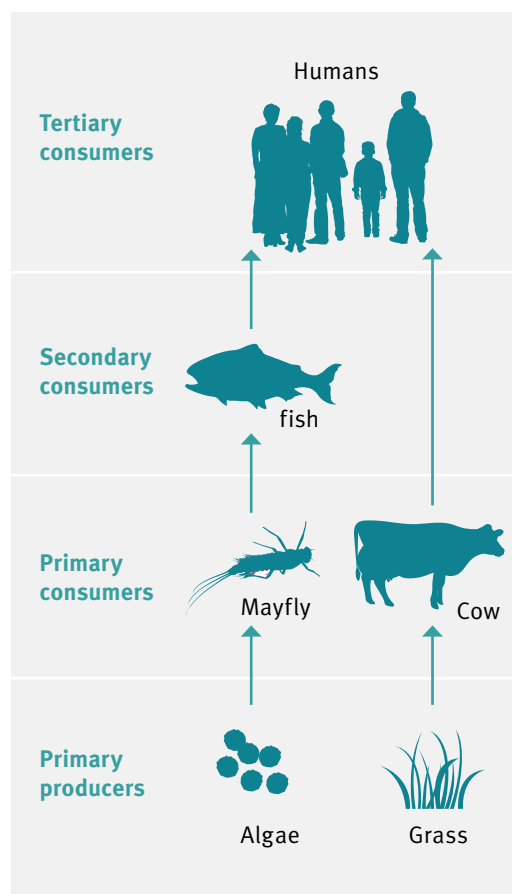
## What do tyre particles do to humans?

The impact of tyre wear particles on human health is an increasing cause for concern. During the manufacturing process, chemicals are combined to form high-endurance rubber, which is then cast into a tyre form. Ingredients include harmful substances such as polyaromatic hydrocarbons (PAHs), benzothiazoles, isoprene, as well as heavy metals such as zinc and lead (Halsband et al., 2020). Toxicology studies into ambient particulate matter, which includes TWP, report that these particles contribute to negative cardiopulmonary, developmental, reproductive and cancer outcomes (Baensch-Baltruschat et al., 2020).

Tyre Leachate Constituents	Public Health Effects and Symptoms
<b>Polyaromatic hydrocarbons (PAHs)</b>	<i>Acute health risks:</i> skin and eye irritation, vomiting. <i>Chronic health risks:</i> cataracts, kidney and liver damage, respiratory problems, decreased immune function (Patel et al., 2020)
<b>Benzothiazoles (BZTs)</b>	<i>Acute health risks:</i> Skin irritant, respiratory problems. <i>Chronic health risks:</i> endocrine disruption, carcinogenic and genotoxic (Liao et al., 2018)
<b>Isoprene</b>	<i>Chronic health risks:</i> Carcinogenic, mutagenic, reproduction cell abnormalities (Melnick, 1994)
<b>Heavy metals (zinc and lead)</b>	<i>Acute health risks:</i> abdominal pain, renal dysfunction, fatigue, sleeplessness, arthritis, hallucinations, and vertigo. <i>Chronic health risks:</i> neurological damage, birth defects, psychosis, paralysis, muscular weakness, brain damage, kidney damage, may even cause death (Jaishankar et al., 2014).

By simply walking on the pavement we are exposed to a range of particles emitted by vehicles because micro and nanoparticles are small enough to become airborne. The distance over which they disperse depends on their size, which puts city-dwellers at significant risk of exposure. Models show that ultrafine, nanosized particles can travel hundreds of metres (Kole et al., 2017). Such pollution may particularly affect members of the population who have pre-existing conditions such as asthma and chronic obstructive pulmonary disease (COPD), as it is well documented that pollution exacerbates these conditions (Kelly & Fussell, 2015). Therefore, it is essential that a risk assessment is carried out to determine the No-Observable-Adverse-Effect-Concentration (NOAEC) of inhaled tyre wear particles. Since the inhalation of tyre wear particles is just one route of exposure, more stringent measurements of leachates at water treatment facilities mandated by governmental policy will significantly improve our knowledge of its dispersion to the wider environment, which will help policy makers set limits and targets to safeguard our water supply.

The potential ingestion of tyre wear particles is a serious issue that is often overlooked and heavily under-investigated. Tyre wear particles and their compounds could accumulate in the food chain, following similar pathways to microplastic, and there is a need to investigate the concentrations of toxic particles in, for example, the meat and fish we consume.



**Figure 3.** Accumulation of toxic tyre leachates concentrates higher up the food chain.

## What do tyre particles do to the environment?

The effect of tyre wear particles on the environment and aquatic species has been more broadly studied through in vivo models on algae, bacteria and other simple aquatic organisms that make up the bottom level of the food chain (Baensch-Baltruschat et al., 2020). Rubber particles and the chemicals that leach out of tyre wear particles can cause increased mortality of aquatic species such as trout, and frogs (Halle et al., 2019). Scientists at Imperial College London working on tyre particles and their effects are now calling for a more concerted research effort to establish standardised testing protocols that would allow us to critically determine the toxicity levels of tyre wear particles and leachate chemicals in the environment. Furthermore, there has been little investigation of the long-term effects of tyre wear particles in the environment. This includes degradation mechanisms, either by light, bacteria, or oxidation (Baensch-Baltruschat et al., 2020). Although the polymers that form the backbone of natural and synthetic rubbers are biodegradable, the additives in the tyre material formulation hinder its degradability (Capolupo et al., 2020). Whilst this reduced degradation is beneficial during the useful life of a tyre, it is a short-term solution that does not consider the tonnes of tyre wear particles that end up in river sediment, much less the mountain of waste car tyres that do not degrade and are extremely difficult to recycle.

**Stricter limits on leachate concentration measured in the environment should be mandated to reduce harm on terrestrial and aquatic species.**

## Why is it important to act now?

As a society, we understand the challenges of pollution and have made major technological steps to reduce automotive emissions. However, these steps have a strong focus on tailpipe emissions, whilst non-tailpipe emissions such as tyre particles have mostly been ignored. Tyre wear pollution is a significant source of microplastics in river ecosystems (Baensch-Baltruschat et al., 2020) and oceans (Parker-Jurd et al., 2019) and new evidence suggests that tyre wear pollution in urban areas could pose up to four orders of magnitude higher environmental risk than other microplastics found in European rivers (Tamis et al., 2021). In order to forecast the impacts of tyre wear pollution we need to understand and quantify the interplay between tyre wear particle generation and transport processes that lead to pollution in rivers and impacts on biodiversity and health. Policy makers must ensure that there is an incentive to also reduce non-exhaust emissions, such as by developing technologies and approaches to enable local access control and ride-sharing schemes to limit the total number of vehicles (Katsikouli et al., 2020). It is strongly suggested that an equal investment as was devoted to zero tailpipe emission technology should be given to the development of technologies that will reduce the amount of tyre wear particles being released into the environment.

**Reduction of tyre wear particles is as important as reducing exhaust emissions. This requires a combination of research and regulatory efforts.**

## Research aimed at solving the tyre particle problem

Preventing harmful effects due to tyre wear particles will require the combined effort from researchers, industry, and policymakers. Researchers from the four Faculties at Imperial College London are jointly taking a multi-scale approach to solving this issue, with research ranging from the microscopic contact between road and tyre to solutions at the vehicle level and the aggregate effects of a fleet of vehicles in a major city such as London. Some examples of studies that are currently being performed within this joint initiative include:

- The mechanics of rubber wear and how tyre particles are generated
- Monitoring and modelling of generation, transport and leaching of chemicals from tyre particles into water and the environment
- Advanced real-time monitoring of airborne particulate matter
- Measuring tyre material in environmental samples
- Human cells and human body response to tyre wear particles
- On-board capture and collection of particulates
- Vehicle control and modulation to reduce tyre particle emissions
- Tyre business and ownership models to promote continued innovation
- City-wide access control and route optimisation to mitigate local peak-emissions

These studies are all performed in conjunction with and within the framework of the Imperial College London Transition to Zero Pollution initiative, aiming to deliver technological innovation and providing advice to governments on future policies.

### Acknowledgements

The research resulting in this white paper was funded by the Institute for Molecular Science and Engineering (IMSE) and the Imperial College London Transition to Zero Pollution initiative.

#### Suggested citation:

Tan Z, Berry A, Charalambides M, Mijic A, Pearse W, Porter A, Ryan MP, Shorten RN, Stettler MEJ, Tetley TD, Wright S, Masen MA. Tyre wear particles are toxic for us and the environment. Imperial College London (2023). doi: <https://doi.org/10.25561/101707>

This work is licensed under a Creative Commons Attribution-NonCommercial-NoDerivatives 4.0 International License.



### About the author

Dr Zhench Tan is a post-doctoral research associate at Imperial College London and Co-Founder of the med-tech start-up Organa. Her research focuses on providing innovative material technology to solve the unmet needs in a variety of industries.



## References

- Aryal, R., Vigneswaran, S., Kandasamy, J. & Naidu, R. (2010) Urban stormwater quality and treatment. *Korean Journal of Chemical Engineering*. 27, 1343-1359.
- Baensch-Baltruschat, B., Kocher, B., Kochleus, C., Stock, F. & Reifferscheid, G. (2021) Tyre and road wear particles - A calculation of generation, transport and release to water and soil with special regard to German roads. *Sci Total Environ*. 752, 141939.
- Baensch-Baltruschat, B., Kocher, B., Stock, F. & Reifferscheid, G. (2020) Tyre and road wear particles (TRWP) - A review of generation, properties, emissions, human health risk, ecotoxicity, and fate in the environment. *Sci Total Environ*. 733, 137823.
- Boogaard, F. C., van de Ven, F., Langeveld, J. G., Kluck, J. & van de Giesen, N. (2017) Removal efficiency of storm water treatment techniques: standardized full scale laboratory testing. *Urban Water Journal*. 14 (3), 255-262.
- Capolupo, M., Sørensen, L., Jayasena, K. D. R., Booth, A. M. & Fabbri, E. (2020) Chemical composition and ecotoxicity of plastic and car tire rubber leachates to aquatic organisms. *Water Research*. 169, 115270.
- Chang, X.-d., Huang, H.-b., Jiao, R.-n. & Liu, J.-p. (2020) Experimental investigation on the characteristics of tire wear particles under different non-vehicle operating parameters. *Tribology International*. 150, 106354.
- Halle, L. L., Palmqvist, A., Kampmann, K. & Khan, F. (2019) Ecotoxicology of micronized tire rubber: Past, present and future considerations. *Science of The Total Environment*. 706, 135694.
- Halsband, C., Sørensen, L., Booth, A. M. & Herzke, D. (2020) Car Tire Crumb Rubber: Does Leaching Produce a Toxic Chemical Cocktail in Coastal Marine Systems? *Frontiers in Environmental Science*. 8.
- Jaishankar, M., Tseten, T., Anbalagan, N., Mathew, B. B. & Beeregowda, K. N. (2014) Toxicity, mechanism and health effects of some heavy metals. *Interdiscip Toxicol*. 7 (2), 60-72.
- Joshi, S. S., Miller, M. R. & Newby, D. E. (2022) Air pollution and cardiovascular disease: the Paul Wood Lecture, British Cardiovascular Society 2021. *Heart*. 108 (16), 1267-1273.
- Katsikouli, P., Ferraro, P., Richardson, H., Cheng, H., Anderson, S., Mallya, D., Timoney, D., Masen, M. & Shorten, R. (2020) Distributed Ledger Enabled Control of Tyre Induced Particulate Matter in Smart Cities. *Frontiers in Sustainable Cities*. 2.
- Kelly, F. J. & Fussell, J. C. (2015) Air pollution and public health: emerging hazards and improved understanding of risk. *Environ Geochem Health*. 37 (4), 631-49.
- Knight, L. J., Parker-Jurd, F. N. F., Al-Sid-Cheikh, M. & Thompson, R. C. (2020) Tyre wear particles: an abundant yet widely unreported microplastic? *Environ Sci Pollut Res Int*. 27 (15), 18345-18354.
- Kole, P. J., Löhr, A. J., Van Belleghem, F. & Ragas, A. M. J. (2017) Wear and Tear of Tyres: A Stealthy Source of Microplastics in the Environment. *Int J Environ Res Public Health*. 14 (10).
- Kreider, M. L., Panko, J. M., McAtee, B. L., Sweet, L. I. & Finley, B. L. (2010) Physical and chemical characterization of tire-related particles: Comparison of particles generated using different methodologies. *Science of The Total Environment*. 408 (3), 652-659.
- Kumar, P., Kalaiarasan, G., Porter, A. E., Pinna, A., Kłosowski, M. M., Demokritou, P., Chung, K. F., Pain, C., Arvind, D. K., Arcucci, R., Adcock, I. M. & Dillway, C. (2021) An overview of methods of fine and ultrafine particle collection for physicochemical characterisation and toxicity assessments. *Science of The Total Environment*. 756, 143553.
- Liao, C., Kim, U.-J. & Kannan, K. (2018) A Review of Environmental Occurrence, Fate, Exposure, and Toxicity of Benzothiazoles. *Environmental Science & Technology*. 52 (9), 5007-5026.
- Manas, D., Manas, M., Stanek, M. & Pata, V. (2009) Wear of tyre treads. *Journal of Achievements in Materials and Manufacturing Engineering*. 37.
- Mao, Y. (2021) *Tyre Thread Ageing Behaviour and Lung Toxicity of Tyre Wear Particles*. MSc. Imperial College London.
- Melnick, R. (1994) *NTP Technical Report on Toxicity Studies of Isoprene*.
- Park, I., Kim, H. & Lee, S. (2018) Characteristics of tire wear particles generated in a laboratory simulation of tire/road contact conditions. *Journal of Aerosol Science*. 124, 30-40.
- Parker-Jurd, F. N. F., Napper, I. E., Abbott, G. D., Hann, S., Wright, S. L. & Thompson, R. C. (2019) *Investigating the sources and pathways of synthetic fibre and vehicle tyre wear contamination into the marine environment*. .
- Patel, A. B., Shaikh, S., Jain, K. R., Desai, C. & Madamwar, D. (2020) Polycyclic Aromatic Hydrocarbons: Sources, Toxicity, and Remediation Approaches. *Front Microbiol*. 11, 562813.
- Raza, M., Chen, L., Leach, F. & Ding, S. (2018) A Review of Particulate Number (PN) Emissions from Gasoline Direct Injection (GDI) Engines and Their Control Techniques. *Energies*. 6.
- Tamis, J., Koelmans, A., Dröge, R., Kaag, N., Keur, M., Tromp, P. & Jongbloed, R. (2021) Environmental risks of car tyre microplastic particles and other road runoff pollutants. *Microplastics and Nanoplastics*. 1.
- Wagner, S., Hüffer, T., Klöckner, P., Wehrhahn, M., Hofmann, T. & Reemtsma, T. (2018) Tire wear particles in the aquatic environment - A review on generation, analysis, occurrence, fate and effects. *Water Research*. 139, 83-100.

## About the Transition to Zero Pollution initiative

Transition to Zero Pollution began in 2020 as a flagship initiative of Imperial College London's Academic Strategy, capturing Imperial's vision to transform the way we think about pollution by bringing together ideas around resource management, health and environmental impacts, socio-economic and human behaviour in a 'whole system' approach. This initiative is the research, education and innovation programme of sustainability at Imperial under Imperial Zero Pollution. With a vision to realise a sustainable zero pollution future, at Imperial we embed a consistent and credible commitment to sustainability into all our work – from our world-leading research and education to how we run our campuses and interact with industry.

## About Imperial College London

Imperial College London is a global university with a world-class reputation in science, engineering, business and medicine, and excellence in teaching and research. Consistently rated amongst the world's best universities, Imperial is committed to developing the next generation of researchers, innovators and leaders through collaboration across disciplines.

## Contact us

For more information about this subject, to discuss how the issues covered affect you and your work, or to contact the authors, please email us at: [zeropollution@imperial.ac.uk](mailto:zeropollution@imperial.ac.uk)

**IMPERIAL  
ZERO  
POLLUTION**